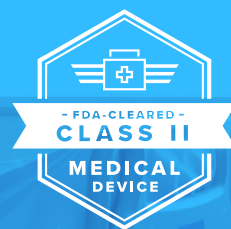




**ActivePure™**  
Wellness Begins with the Air You Breathe™



## The ActivePure® Medical Guardian is an FDA-Cleared Class II Medical Device Designed to Reduce Airborne Contaminants with Minimal Maintenance

The ActivePure® Medical Guardian is a free-standing, FDA-cleared device used in professional healthcare environments to reduce airborne contaminants. ActivePure reduces the viability of microorganisms by 4-6 logs, such as *Staphylococcus epidermidis* and MS2 as tested, shown in the table below.

### ACTIVEPURE EFFICACY

In extensive FDA certified compliant laboratory testing at 72 degrees with 50% humidity, ActivePure® Technology has been proven to significantly reduce pathogens within 6 hours<sup>1</sup>:

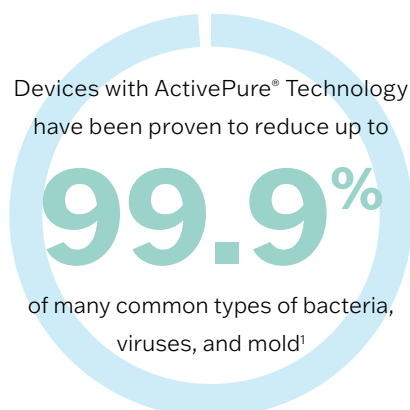
Organism Type	Organism Name	Avg Log-Reduction
Bacteria	<i>Staphylococcus epidermidis</i>	5.95
Virus	MS2 bacteriophage	5.58
Bacteria	<i>Erwinia herbicola</i>	5.12
Bacterial spore	<i>Bacillus globigii</i>	4.22
Virus	Phi-X174	4.19
Fungal spore	<i>Aspergillus niger</i>	4.12

### BENEFITS

- FDA-Cleared Class II Medical Device
- Meets California Ozone Emissions Limits
- No Installation Required
- Approved for Use in Rooms Occupied with Patients
- Low Maintenance
- Whisper-Silent Operation
- Easy-to-Use Control Panel
- Maintenance Reminders and Auto Dimmable Lights
- Designed to Operate Unattended 24/7
- No Interference With or From Existing Equipment
- Grounded to Prevent Electrostatic Discharge



<sup>1</sup>View test results at  
[ActivePure.com/Scientific-Proof](https://www.ActivePure.com/Scientific-Proof)



# ActivePure®

MEDICAL GUARDIAN



**Product Information** 00712 Model: F170A  
**Meets California ozone emissions limit. CARB Certified Validated to UL 2998**

**Technology Included** ActivePure® Technology – (1) Cell Assembly w/ (2) 9" HO bulbs  
Negative Ionization  
HEPA Filter  
Activated Carbon Filter

**Electrical** 1 to 117 Watts  
120 VAC, 60 Hz 1.0 Amp

**Nominal Airflow Rate**

- Whisper: 90 CFM, 53 m<sup>3</sup>/hr
- Low: 100 CFM, 59 m<sup>3</sup>/hr
- Medium: 180 CFM, 305 m<sup>3</sup>/hr
- High: 300 CFM, 509 m<sup>3</sup>/hr

**Weight & Dimensions** 48 lbs / 21.8 kg  
26.5" H x 11.5" W x 21.0" D (673mm x 292mm x 533mm)

**Sound Level**

- Whisper: 43 dB(A)
- Low: 48 dB(A)
- Medium: 64 dB(A)
- High: 70 dB(A)

**Recommended Maximum Coverage in a Contiguous Space<sup>1</sup>** Designed to Treat a Space Approximately 3,000 Cubic Feet That Would Have 8' to 10' Ceilings

**Maintenance** 6-Month Filter Replacement  
Annual (12 months) Cell Replacement

**Warranty** Limited 1-Year Warranty

1. Recommended ceiling height to not exceed 10 ft. Solutions should be customized based upon a variety of factors including HVAC system capabilities, HVAC settings, air flows (taking into account walls, air pressure, and doors), ambient air temperature, humidity, variable density, known VOC concentrations, and other layers of protection.



*Let us show you more!*

ActivePure Technology is available in HVAC, In duct units and portable, plug-and-play units.

 **ActivePure™**

ActivePure.com